

ENOG Antibody
Mouse Monoclonal Antibody (Mab)
Catalog # AM1928b**Specification**

ENOG Antibody - Product Information

Application	IHC-P, WB,E
Primary Accession	P09104
Other Accession	NP_001966.1
Reactivity	Human
Host	Mouse
Clonality	Monoclonal
Isotype	IgG2b,k
Calculated MW	47269

ENOG Antibody - Additional Information**Gene ID** 2026**Other Names**

Gamma-enolase, 2-phospho-D-glycerate hydro-lyase, Enolase 2, Neural enolase, Neuron-specific enolase, NSE, ENO2

Target/Specificity

This ENOG monoclonal antibody is generated from mouse immunized with ENOG recombinant protein.

Dilution

IHC-P~~1:10~50

WB~~1:1000

E~~Use at an assay dependent concentration.

Format

Purified monoclonal antibody supplied in PBS with 0.09% (W/V) sodium azide. This antibody is purified through a protein G column, followed by dialysis against PBS.

Storage

Maintain refrigerated at 2-8°C for up to 2 weeks. For long term storage store at -20°C in small aliquots to prevent freeze-thaw cycles.

Precautions

ENOG Antibody is for research use only and not for use in diagnostic or therapeutic procedures.

ENOG Antibody - Protein Information**Name** ENO2 ([HGNC:3353](#))**Function** Enolase that catalyzes the conversion of 2-phosphoglycerate to phosphoenolpyruvate in

glycolysis and the reverse reaction in gluconeogenesis (By similarity). Has neurotrophic and neuroprotective properties on a broad spectrum of central nervous system (CNS) neurons. Binds, in a calcium-dependent manner, to cultured neocortical neurons and promotes cell survival (By similarity).

Cellular Location

Cytoplasm. Cell membrane. Note=Can translocate to the plasma membrane in either the homodimeric (alpha/alpha) or heterodimeric (alpha/gamma) form

Tissue Location

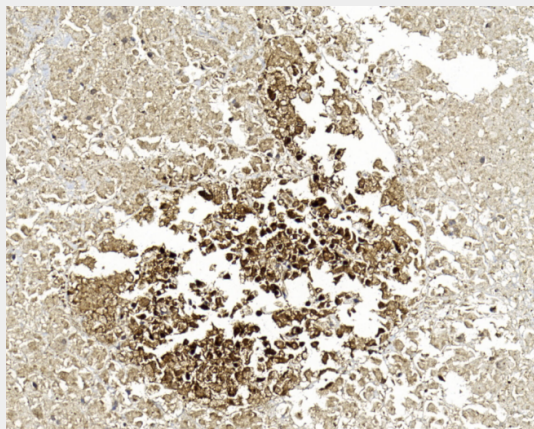
The alpha/alpha homodimer is expressed in embryo and in most adult tissues. The alpha/beta heterodimer and the beta/beta homodimer are found in striated muscle, and the alpha/gamma heterodimer and the gamma/gamma homodimer in neurons

ENOG Antibody - Protocols

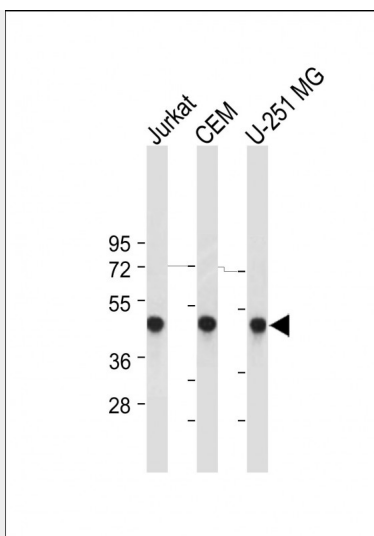
Provided below are standard protocols that you may find useful for product applications.

- [Western Blot](#)
- [Blocking Peptides](#)
- [Dot Blot](#)
- [Immunohistochemistry](#)
- [Immunofluorescence](#)
- [Immunoprecipitation](#)
- [Flow Cytometry](#)
- [Cell Culture](#)

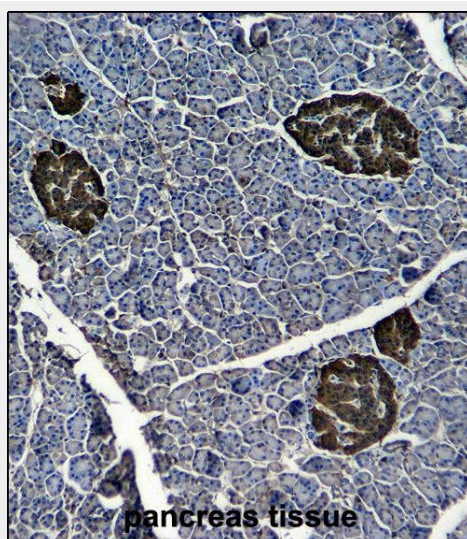
ENOG Antibody - Images



Immunohistochemical analysis of paraffin-embedded Human pancreas section using Pink1(Cat#AM1928b). AM1928b was diluted at 1:2000 dilution. A undiluted biotinylated goat polyvalent antibody was used as the secondary, followed by DAB staining.



All lanes : Anti-ENOG at 1:1000 dilution Lane 1: Jurkat whole cell lysate Lane 2: CEM whole cell lysate Lane 3: U-251 MG whole cell lysate Lysates/proteins at 20 µg per lane. Secondary Goat Anti-mouse IgG, (H+L), Peroxidase conjugated at 1/10000 dilution. Predicted band size : 47 kDa Blocking/Dilution buffer: 5% NFDM/TBST.



ENOG Antibody (Cat. #AM1928b) immunohistochemistry analysis in formalin fixed and paraffin embedded human pancreas tissue followed by peroxidase conjugation of the secondary antibody and DAB staining. This data demonstrates the use of ENOG Antibody for immunohistochemistry. Clinical relevance has not been evaluated.

ENOG Antibody - Background

This gene encodes one of the three enolase isoenzymes found in mammals. This isoenzyme, a homodimer, is found in mature neurons and cells of neuronal origin. A switch from alpha enolase to gamma enolase occurs in neural tissue during development in rats and primates.

ENOG Antibody - References

Martins-de-Souza, D., et al. J Psychiatr Res 44(14):989-991(2010)
Mukhtarova, S.N. Georgian Med News 181, 49-54 (2010) :

Planche, V., et al. Ann. Biol. Clin. (Paris) 68(2):239-242(2010)

Chaves, M.L., et al. J Neuroinflammation 7, 6 (2010) :

Wijeyaratne, S.M., et al. Eur J Vasc Endovasc Surg 38(3):262-266(2009)